

ANNUAL REPORT

2021 - 2022

The logo consists of several overlapping, hand-drawn style purple circles of varying sizes, creating a sense of movement and community.

Gloucester
Community
Building
Collective

WE BRING PEOPLE TOGETHER TO TAKE ACTION
IN THEIR COMMUNITY

GLOUCESTER COMMUNITY BUILDING COLLECTIVE CIC

About Us

We work with people in Gloucester to encourage them to make meaningful connections with one another and in their communities, to discover and pursue their passions and interests, share their skills and to be valued for their contribution. We work this way because we know this helps to build resilient and strong communities where everyone can thrive and have a good life.

Our Vision

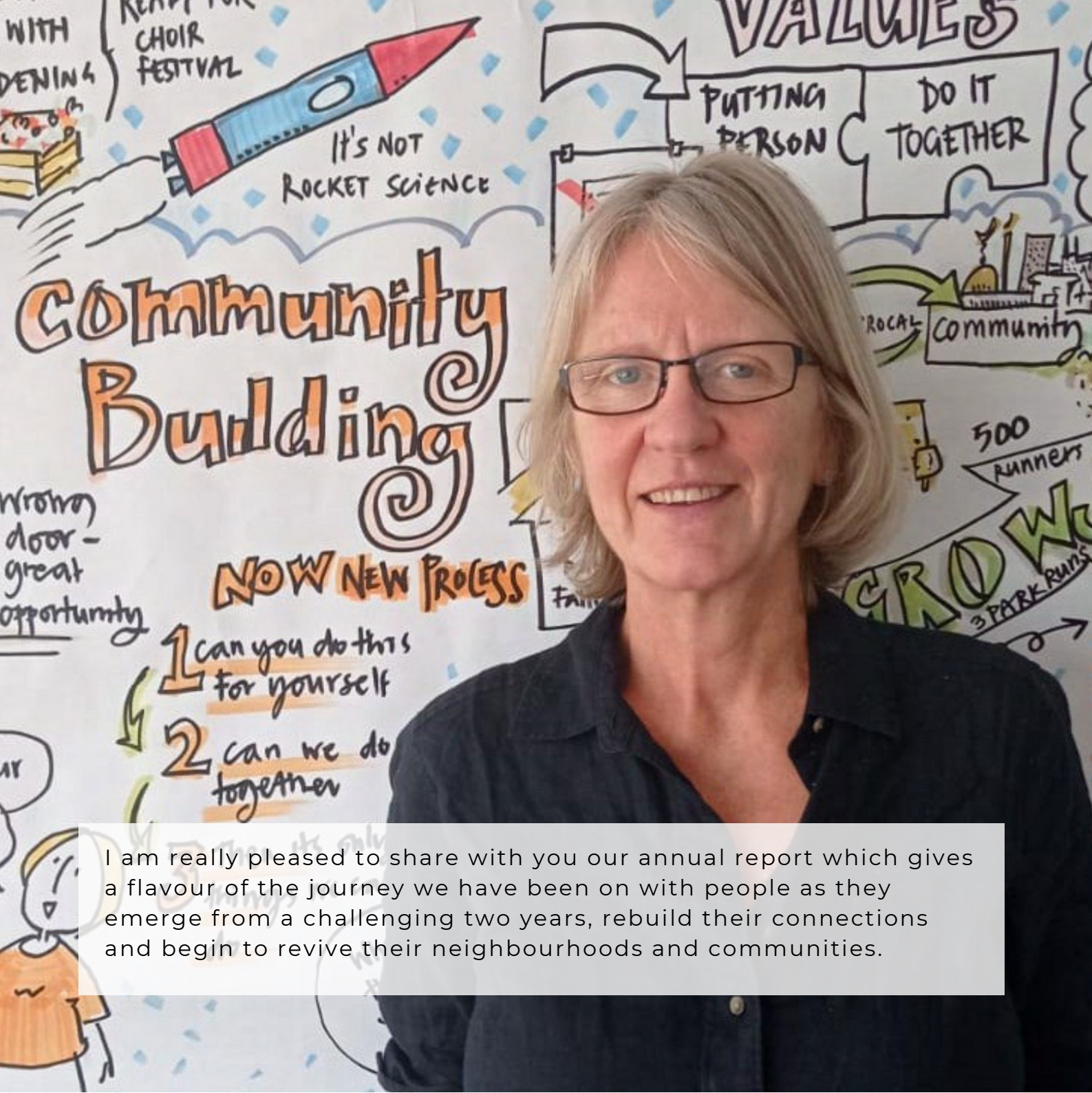
Gloucester is a great place to live,
where everyone can have a good life.

Our Mission

Bringing about people-led action to realise their dreams and passions for themselves, their neighbourhoods and communities.

Our Values

People-Led.
Strengths-Based.
Relationship Focused.
Rooted in Local Communities.
Inclusive.



I am really pleased to share with you our annual report which gives a flavour of the journey we have been on with people as they emerge from a challenging two years, rebuild their connections and begin to revive their neighbourhoods and communities.

WELCOME

People in communities did wonderful things to support each other during the pandemic but there is nothing quite like being able to get out and about in the streets of Gloucester, meet face to face and get back to doing things we enjoy together.

This report describes the power of connections for our well-being, especially after a time when many of us have been isolated or anxious.

I am really proud of the hard work and commitment of our team of community builders.

Their encouragement has seen people take up new activities, form new groups where they can share the things they enjoy doing, and take action; whether it is just to take a holiday with a new friend, join a cycling group, get together in the local community centre and transform it into a place buzzing with people, new classes and activities or set up a group with a bank account to improve their local park.

We have also been an active partner, working with organisations in the city, e.g. Health, Local Government and the Police, advocating for what is already positive and strong in communities and for building community capacity.

None of this would be possible without the support from our funders to whom we are very grateful. We finish this financial year in a good financial position with significant strategic investment in addition to project-led funding and the five-year investment from the Big Lottery Community Fund which began in April 2021.



Justine Rawlings
Executive Director

REFERENCE AND ADMINISTRATIVE DETAILS

For the year ended 31st March 2022

Company Number

12354927

Registered Office

Morroway House
Station Road
Gloucester
GL1 1DW

Directors

Anne Brinkhoff (Chair)
Candace Plouffe (Deputy Chair)
Justine Rawlings
Mark Gayle
Miranda Bopoto
Ruth Saunders
Sally Byng

Auditors

Hazlewoods LLP
Staverton Court
Staverton
Cheltenham
GL51 0UX

INCOME AND EXPENDITURE

For the year ended 31st March 2022

	2022	2021
TURNOVER	£205,948	£81,976
Staff Costs	£113,719	£74,631
Other Chargers	£19,534	£13,865
	<hr/>	<hr/>
SURPLUS/(DEFICIT) BEFORE TAXATION	£72,695	£6,520
Tax	£412	-
	<hr/>	<hr/>
NET SURPLUS/(DEFICIT)	£72,283	£6,520

OUR YEAR 2021-2022

April 2021
First meeting with
the new board

August 2021
Spoke to 30 different
stakeholders for their
feedback on the CIC

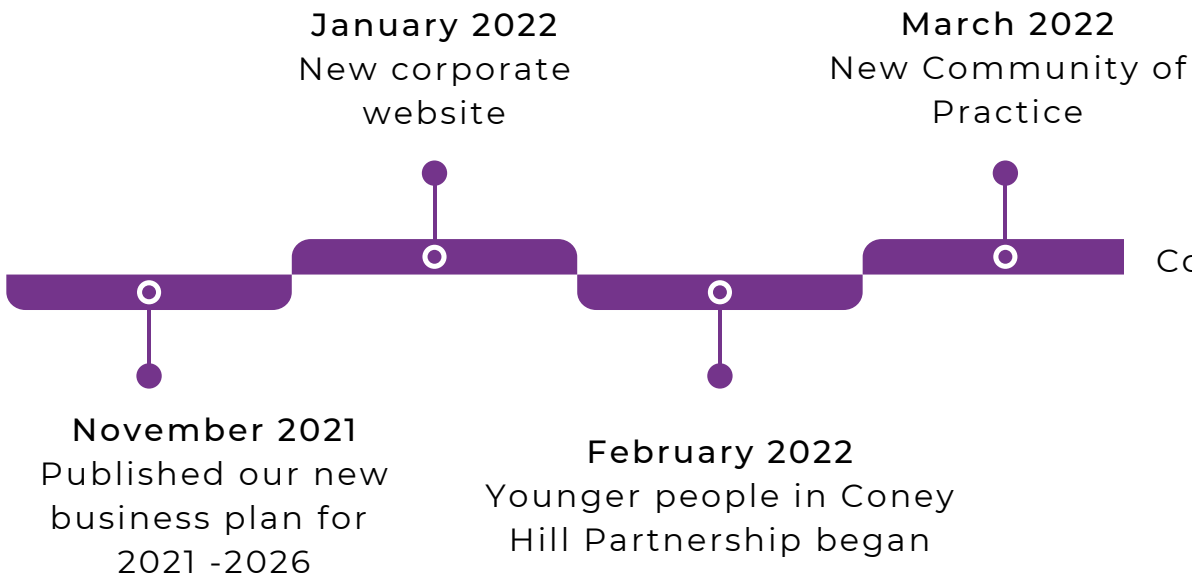
October 2021
Welcomed Mark
Lucking as the new
Marketing and
Comms Lead &
Community Builder

June 2021
Welcomed Justine
Rawlings as the new
Executive Director

September 2021
Launched training
offer

“You bring a different energy.... and you bring that into the dynamic not to force the agenda but in a nice way. You direct the energy positively towards the community and the things they already have or things that they themselves want to do. You remind us not to come from a deficit-based standpoint”-
JO

“What is so great is ‘ the people and their passion’! A team of lovely people who care about the community and care about people; they are all great at building relationships of trust, understanding others’ perspectives and working together for a shared purpose” -
KIRSTY



Our year in numbers



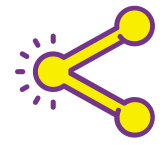
Over 5,000 Conversations had with residents



Over 600 connections made between residents

GloucesterCan Initiative ended November 2021

Over 2,900 residents interacted with the GloucesterCan platform over the last year



Over 500 Connections made between residents and organisations



Over 300 residents engaged with projects funded by Neighbourhood Fund between 2021-2022



OUR TEAM

Our team includes Justine our Executive Director and our 9 community builders. Our Community Builders are based across 7 wards in Gloucester and are a mixture of people we have employed and secondees from Gloucester City Council (1) and Gloucestershire County Council (3).

We are a team from a range of different backgrounds, passionate about discovering people's skills and talents, seeing what people can do where they live to make their communities thrive.

Over the last year, we have enjoyed meeting a variety of brilliant people across Gloucester. We were inspired by people showing kindness and support for each other during the Pandemic.

When restrictions began to lift, we saw people come together once more, creating new groups and activities across Gloucester, from taking pride in green spaces, to organising community get togethers, craft groups and exercise groups. We have seen the true power of what communities can do over the last year, to create real change and make Gloucester a great place to live.

KINGSHOLM


There has been a community builder in Kingsholm for some time. Matt's work, as part of Strengthening Local Communities programme over the last two years was built on this legacy.

Kingsholm is a place where people have continued to be creative. Over the last year many new friendships have formed through a variety of resident social events, be it BBQ's, walking trails, garden parties and informal connections but best of all, people taking pride in where they live, dreaming again of the future opportunities as a community.

WESTGATE

An ideas party was held to bring people together to open conversation for what communities would like to see. This work was part of a wider diabetes project, testing how community building can support more specific health outcomes. Verona worked with people in Westgate and other areas, who are not currently accessing traditional diabetes education services.

We have learned that people taking part in activities that they enjoy, (e.g. creating a community garden) develops a sense of wellbeing, ensuring people are more likely to take care of themselves and others.



"During the lockdown, many residents pulled together and supported each other, doing what they could to support their community"

- VERONA, COMMUNITY BUILDER

"People are always amazed that they have so many gifts and talents when others encourage them. My hope this year is that they continue with this confidence in themselves and share it with each other."

- MATT, COMMUNITY BUILDER

"The collective helps us tackle the wicked issues – we should be creating health and wellbeing rather than addressing the deficits."

- WILL

ELMBRIDGE & LONGLEVENS



Carena has been working in the area for two years. In that time several new groups have grown up around the Longlevens community café and other community “bumping spaces.”

Carena’s energy in making connections and encouraging people to act is really bearing fruit.

RECYCLED TEENAGERS

"Carena's done a wonderful job. Without her support, this group would not have been. Carena helped find this space and helped to open the door"
- RESIDENT & RECYCLED TEENAGER



As restrictions lifted in the middle of May, Carena met residents who wanted to get back to meeting face to face. Most groups were still only meeting online, so a lot of people were not as confident or did not have the ability, for whatever reason, to meet online and were really struggling.

Carena helped open a conversation between the Longlevens Community Centre and a local resident, Gerry, setting up a place to meet for coffee each week. This group has continued to grow and is now arranging different activities and trips together.

LINDEN & MORELAND



"It was great to see the connections between people grow around the Lannett. So many positive things happened. It is so important when people can meet and have conversations, so many opportunities can grow out of it."

- AGNES, COMMUNITY BUILDER

When Agnes started in Linden, it was hard to see, from the outside, where the community action was going to start. Since the lockdown more people got together, wanting to make better use of and improve the community green spaces.

There are at least two new community groups working together, making their community green spaces safe and welcoming. Communities have taken action to create the change they want to see, and celebrated together.

FRIENDS OF THE LANNETT



People in the area met and talked about what they would like to do and see. They made a plan of what needed to be done, and have shared their ideas, such as creating a wildlife spot for the Lanett, a green space in Linden.

The group came together with other people from the community, to clean the Lannett, creating a litter-free green space and planted over 1,000 bulbs.


ABBEYDALE & ABBEYMEAD



Mark and Carol have encouraged the start of a weekly coffee morning in Abbeydale, together with the Abbeydale Community Centre. They did this, initially hoping to meet new people and open up a conversation about what people would like to see and be involved in.

Carol and Mark are also setting up a group for people working in the area such as PCSOs, social prescribing link workers, local businesses, churches etc to see how they can better connect with residents and communities they serve.

COFFEE MORNING



The coffee morning has gone from strength to strength. With support from the community centre, more people join each week.

We have enjoyed meeting people who live in the area and finding out about their hobbies and passions. The group have shared ideas of what they would like to do together, from days out, learning sign language and taking part in a beach clean.



"People in communities are immensely gifted, more gifted than anyone can imagine. I have loved discovering some of those gifts this year and look forward to discovering more in the future!"

- RAE, COMMUNITY BUILDER

POLICE
COMMUNITY
SUPPORT
OFFICER

9232
GRIFFITHS

BARTON AND TREDWORTH

Barton and Tredworth is a place that has lots going on! Many organisations work there and lots of local people are active in their neighbourhoods, however we continue to find that new connections and new activities are sparked by our community builder, Rae's, conversations with residents.

We most recently worked with Active Gloucestershire, on the 'We Can Move' programme in Gloucestershire. The research they commissioned demonstrated several things, including that their goal of increasing physical activity in the community can be delivered by our approach of talking to people about what they want to do, what motivates them and supporting them to make it happen.

People have come together and started walking groups, running groups, gardening groups and litter-picking groups. Rae has found that connecting individuals together has been equally as rewarding, focusing on personal relationships local people have with their neighbours and seeing people come out of their shell for the first time.

Green spaces have been used even more, especially Gloucester Park, and local people have taken the lead on the things that matter to them. For Rae, seeing people come together just to share life with each other is really valuable and something that will make lasting change to people's futures.



Active
Gloucestershire

CONEY HILL



Young people are just as likely to want to be part of their community, that is why we are pleased to welcome Julian and Kyla, our new younger people community builders who have just started in Coney Hill.

This is an exciting new project, working with the NHS – the Clinical Commissioning Group, Young Gloucestershire, Active Gloucestershire, Gloucestershire Constabulary and Gloucester City Council, to support young people to share their ideas and passions to create something for themselves in their community.

TRAINING

This year, we have expanded our offer to include training for communities and statutory services alike. We offer an insight into 'Asset Based Community Development (ABCD)', focusing on how it works practically, on the ground, delivered by experienced Community Builders working in Gloucester on a day-to-day basis.

We have delivered training to a number of District Councils, Public Health teams and Community Engagement Organisations, both in Gloucestershire and further afield, sharing our experience of strength-based working. We love to connect with people who work in communities and to talk about ABCD, helping organisations discover local assets, gifts of residents and the value of working with people over the long term.

COMMUNITY OF PRACTICE

We have set up a 'community of practice', a place for people who work with communities in Gloucester to come and talk about strength-based working, encouraging each other in dealing with any challenges. This is designed to include anyone who works or volunteers with communities in Gloucester and aims to incorporate a collective process to its running, encouraging all those involved to take a lead.

We hope that the 'community of practice' will open more conversations about Gloucester and what is important in the city, ultimately creating a movement where people are better equipped to take action on the things that matter to them.



WHATS NEXT 2022 -2023



NEIGHBOURHOOD FUND

The Neighbourhood Fund has been extended until 2023. It offers small pots of funding of up to £250 to help residents try their ideas in the community

The logo for 'we are gloucester.' consists of the text 'we are gloucester.' in a lowercase, sans-serif font. The text is enclosed in a thin purple border that forms a partial frame around it.

WE ARE GLOUCESTER

We have launched a community-led website, so people can share their stories and achievements. We hope people will share their ideas and connect to others who want to start something where they live.



DIGITAL COMMUNITY BUILDER

This is an exciting partnership between Gloucester Community Building Collective, GL Communities and the Gloucestershire Digital Hubs project. We will help to establish digital hubs in places where people meet across Gloucester, so that people can access and use digital technologies to help them do what matters to them.



We are looking forward to talking to people in Gloucester about our exciting project this year, to take action to make our organisation more community-led, including looking at our board and our membership.



G L O

NOTABLE PEOPLE

U C E

PLACES

S T E

EVERYDAY

R S H

EVERYDAY

U D I

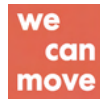
ACKNOWLEDGEMENTS

Thank you to everyone we have worked with across Gloucester.

From the whole team, we would like to say thank you to all the people we have met and worked with over the past year, hearing your ideas and thoughts about your area, making us feel so welcome in your communities. It has been a pleasure being involved in so many different projects, events and activities across Gloucester over the last year.

We look forward to an exciting year of seeing the power of people taking action in their communities.

Thank you to our funders & partnerships who make our work possible.



Active
Gloucestershire



Gloucestershire Constabulary





GLOUCESTER COMMUNITY BUILDING COLLECTIVE

Gloucester Community Building Collective C.I.C.,
Morroway House, Station Rd, Gloucester GL1 1DW.

<https://www.gloscommunitybuilding.co.uk>
info@gloscommunitybuilding.co.uk



Gloucester Community
Building Collective



@gloscommbuilder



Gloucester Community
Building Collective